

Adding a Vulcan chartplotter to your boat is easy:

- Just add power for basic navigation and chart plotting functionality
- For advanced sailing features simply add: wind sensor, compass sensor and speed log
- Mount where and how you want, with flush, console and bracket mounting options
- Compatible with your existing B&G system
- Compatible with other manufacturer's products and systems
- Simple to add to a NMEA 2000 or NMEA0183 system

For more information on your boat's compatibility with Vulcan visit www.bandg.com/upgrademyboat or speak to your local B&G electronics dealer.

Vulcan Specifications

	Vulcan 7	Vulcan 5
Size (WxHxD):	200 x 143 x 70mm - 7.87 x 5.63 x 2.76"	152 x 120 x 57.9mm - 5.98 x 4.72 x 2.28"
Weight:	0.9kg - 2lbs	0.54kg - 1.18lbs
Power Consumption:	950mA @ 13.5V	900mA @ 13.5V
Operating Temperature:	-15°C to +55°C	-15°C to +55°C
Environment:	IPX7	IPX7
Screen Size:	7" Diagonal	5" Diagonal
Screen Type:	TFT, SuperWide	TFT, Widescreen
Screen Resolution:	800 x 480 pixels	800 x 480 pixels
Screen Brightness:	1200nits	1200nits

Features mentioned may require additional transducers, inputs or software updates to enable full function. Products, features and specifications are the most recent available and are subject to change without notice.



B&G

www.bandg.com

ENC0369 (EN)03-15

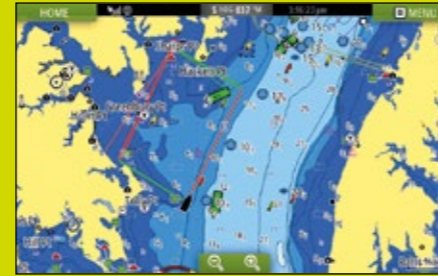


Introducing the Vulcan multi-touch chartplotter.

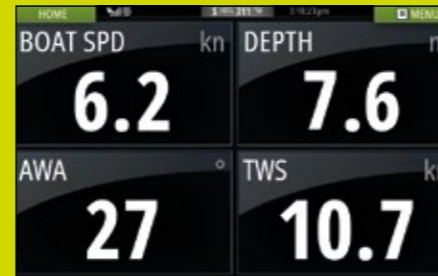


- 7 & 5" Multi-touch sailing chartplotter
- Award winning sailing features including SailSteer™ & ForwardScan®
- Large digit instrument display
- Choose your favourite charts
- Integrated Wi-Fi so you can view on your tablet and smartphone
- Control your B&G Autopilot

The perfect addition to your sailing boat.



Chartplotter - high performance chartplotter with accurate 10hz Internal GPS antenna and the widest range of charts. Choose from C-MAP, Navionics and NV Digital.



Instruments - large instrument display. Connect to your NMEA2000 Network to see data in large, clear digits; the more transducers on the network, the more you will see.



Cruising Screen - B&G's unique SailSteer feature takes time consuming, complex navigation tasks and displays them dynamically on one simple to understand screen.



ForwardScan® - Show what lies ahead under the water with approaching depth information.



- Receive automatic software updates direct to your **Vulcan**
- Download the latest charts from Jeppesen C-MAP and other third parties directly to your **Vulcan**
- Download & utilise dedicated sailing/marine apps from mobile devices to enhance your boating experience
- View your **Vulcan** from your smartphone, or view and control from your tablet

